



European
Population
Conference

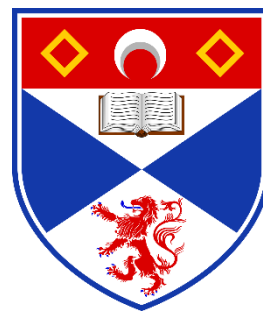


12-15 June
2024
Edinburgh
Scotland, UK



EPC 2024

Participant Pack



Sponsors & Contributors:



CONNECTING
GENERATIONS



Scottish Government
Riaghaltas na h-Alba



MAX PLANCK INSTITUTE
FOR DEMOGRAPHIC RESEARCH



Contents

Welcome	3
Code of Conduct Statement	5
Conference Programme	6
Registration/Help Desk Timings	10
Travelling in Edinburgh	11
Conference Registration	13
Presenter Information	14
Exhibition Stands	15
Facilities, Meals, and Breaks	16
Emergency Contact Numbers.....	18
Sponsors and Contributors	19
Centre for Population Change	19
ESRC Connecting Generations.....	19
Max Planck Institute for Demographic Research	19
Wittgenstein Centre for Demography and Global Human Capital	20
Scottish Government’s Population Team	20
European Association for Population Studies	20
University of St Andrews School of Geography and Sustainable Development.....	21
MigrantLife Project	21
Organising Committee	22
Conference Maps	23

Please send any questions about the participant pack to **Parth Pandya** at epc2024scotland@st-andrews.ac.uk.



European
Population
Conference



12-15 June
2024
Edinburgh
Scotland, UK



Welcome

On behalf of the European Association for Population Studies (EAPS) I am delighted to welcome you to the European Population Conference 2024 in Edinburgh! EAPS was established in 1983 to promote population research in Europe. In 1987, the first European Population Conference (EPC) was held in Jyväskylä, Finland. About 150 people participated. Over the years, the EAPS membership has increased, and population conferences have become one of our flagship events; they were initially held every four years and then since the late 1990s have been held every two years. EPC 2024 in Edinburgh will be the 16th conference of our society, which is now more than 40 years old!

What do we have in a three-day conference programme? There will be an Opening Plenary Session with official speakers and a Keynote address by Prof. Emily Grundy with her take on the conference theme of Sustainable Populations through the lens of changing family life courses and intergenerational influences on health and wellbeing in ageing populations. The program further comprises some 120 regular sessions including 3 poster sessions and several invited sessions and a Closing and Award Ceremony. Many regular sessions will focus on one of the three key topics of demographic research: fertility-family, health-mortality and migration. But there will also be sessions on intergenerational relations, life course, population history, economics, and policy, and on environment and sustainability. We welcome an increased interest among demographers in the interrelations between climate change and population change. Clearly, as population researchers we are in a unique position to help our societies understand how population and environment interact and what would be needed to reach both demographic and environmental sustainability.

This year, the programme includes two Advances in Population Research sessions on the emerging field of kinship demography and on the role of demography in policy and decision making. We will also have two sessions initiated by the Scottish organisers, one with a focus on long-term population trends in Scotland and governmental policies to mitigate the impact of demographic developments, and one on population change and sustainability in Scotland. There will also be an invited session on Ukraine's demography with the focus on mortality and forced displacement in war-torn Ukraine and an opportunity for Ukrainian demographers to present their research. Please do not forget to visit the Exhibition where you will find a host of interesting information from our exhibitors. Poster sessions in particular have always been places to meet old friends and to make new friends. Two



European Population Conference



12-15 June
2024
Edinburgh
Scotland, UK



poster sessions will be held over lunch time, whereas the third session will be in the early evening. The latter session will include a glass of free wine, beer, or a soft drink.

We hope that throughout the entire conference participants will follow an admirable British and Scottish tradition to include new friends and colleagues in your conversations. There will be many of us in Edinburgh who know each other well, but others, including those who come from countries outside of Europe or who are in the early stages of their career, may not know anyone else at the beginning. Let us make them feel welcomed!

On behalf of EAPS, I wish to thank all nineteen convenors for the time and effort they dedicated to creating the scientific program as well as the session chairs and, of course, Nico van Nimwegen, the EAPS Executive Director, for his work as Conference Secretary. I also wish to express my gratitude to all organisations who supported EPC 2024: without their support we could not have afforded the conference venue in the old town of Edinburgh! Finally, I wish to say an enormous thank you to the local and national organising committee led by Prof. Elspeth Graham who have made the impossible possible! Tapadh leibh!

Welcome to Edinburgh!

Fàilte gu Dùn Èideann!

Hill Kulu

EAPS President



European Population Conference



12-15 June
2024
Edinburgh
Scotland, UK



Code of Conduct Statement

The EPC Organising Committee and European Association for Population Studies (EAPS) aim to provide a harassment-free conference experience for everyone, regardless of gender identity and expression, age, sexual orientation, disability, physical appearance, race, ethnicity, religion (or lack thereof). This is not an exhaustive list. We do not tolerate harassment of conference participants in any form, nor disruption of any conference sessions. This extends to all aspects of the conference i.e., not only conference sessions, but any EPC organised social event, at meals and breaks, and between sessions, etc. Please report any instances of unacceptable behaviour to one of the Organising Committee who will be wearing red coloured lanyards.

By attending this conference, you agree to follow and abide by the above statement. If you have any questions, please contact a member of the Organising Committee.



Conference Programme

Most EPC sessions will take place in the George Square (GS) buildings (see end for maps). For full conference please see the website: [epc2024.eaps.nl/hps/EPC2024 PreliminaryProgram.pdf](http://epc2024.eaps.nl/hps/EPC2024_PreliminaryProgram.pdf)

Wednesday 12 th June	9:00-13:00	EAPS PhD Network	George Square 40/50 (G.05)
	9:00-17:00	Scientific Panel Lifetime Migration, International Union for the Scientific Study of Population IUSSP	G.06
	13:00-17:00	EAPS Working Group Fertility and Family Dynamics in Migrant & Minority Groups	G.01
		EAPS Working Group Infertility and Medically Assisted Reproduction	G.02
		EAPS Working Group Sustainable Ageing	G.05
		EAPS Working Group Child and Adolescent Development	LG.06
		EAPS Working Group Equity and Diversity in Demography and Demographic Research	LG.09
		European Doctoral School of Demography	LG.10
	15:30-17:00	EAPS & Population Europe Joint Event	G.03
17:30-20:30	EPC Opening Ceremony, Keynote Address & Welcome Reception	McEwan Hall Main Auditorium	
Thursday 13 th June	9:00-10:30	Machine Learning Approaches for Population Research	Lecture Theatre B
		Ageing and its Consequences	Lecture Theatre C
		Same-sex Couples and Queer Identities	LG.06
		Kinship Demography: Mortality Risks, Inequalities and Longevity	LG.08
		Migration Momentum: Mapping Multigenerational Mobility	LG.10
		Internal Migration and Urbanization	LG.09
		Harnessing the Power of Genealogical Data: Opportunities and Challenges	G.02
		Innovations with Internet and Consumer Data	G.03
		Contextual Factors for Fertility	G.04
		Climate Change Impacts in the Global South	G.05
		Well-being, Living Arrangements and Satisfaction among Older People	G.06
	Flash session Data Infrastructures for Population Research	McEwan Hall Main Auditorium	
	Health, Wellbeing and Morbidity in Old Age	Lecture Theatre A	
	10:30-11:00	Coffee Break	
11:00-12:30	Flash session Migrant Populations	Lecture Theatre A	



	Union Dissolution	Lecture Theatre B
	Modelling Kinship and Fertility Processes	Lecture Theatre C
	Refugees	LG.06
	The Impact of the COVID-19 Pandemic on Health, Wellbeing and Morbidity	LG.08
	Trajectories of Singlehood	LG.10
	Fertility and Singlehood	LG.09
	Policy Effects on Fertility	G.02
	Longevity and Health	G.03
	Advances in Population Research: Is demography losing its foresight capacity for policymaking in Europe?	G.04
	Fertility and Health	G.05
	Migration and Spatial Aspects of Ageing	G.06
	Flash session Fertility Intentions	McEwan Hall Main Auditorium
12:30-14:00	Lunch & Poster session 1: Fertility, Family, Life Course	McEwan Hall
14:00-15:30	Flash session 1 Economics, Human Capital and Labour Markets	Lecture Theatre A
	Flash session New and Critical Perspectives on Data Collection and Measurement	Lecture Theatre B
	Flash session Morbidity	Lecture Theatre C
	Migrant Health	LG.06
	Time Trends in Family and Household Types	LG.08
	Grandparents and Grandparenting	LG.10
	Policy Effects on Health and Mortality	LG.09
	Determinants of Depression	G.02
	Social Inequalities in Mortality	G.03
	Scotland's Demography and Population Policies	G.04
	Union Dissolution and Children	G.05
	Fertility and Education	G.06
	Flash session Values and Attitudes about Family and Gender	McEwan Hall Main Auditorium
15:30-16:00	Coffee Break	
16:00-17:30	Flash Session Family Effects on Children	Lecture Theatre A
	Flash session Internal Migration: temporalities, socio-economic and health outcomes	Lecture Theatre B
	Gender, Households and Housework	Lecture Theatre C
	Migrant Populations and Education	LG.06
	Impacts of Policies and Policy Reforms	LG.08
	Assisted Reproduction	LG.10
	COVID-19 Impact on Fertility	LG.09



European Population Conference



12-15 June
2024
Edinburgh
Scotland, UK



		Internal Migration and Urban Change	G.02
		Life Table Methods and Decompositions in Mortality Research	G.03
		Social Inequalities in Sexual and Reproductive Health	G.04
		Environment and Sustainability	G.05
		Causes of Death and Multi-morbidity at Death	G.06
		Modelling Subnational and Spatial Variation	McEwan Hall Main Auditorium
	18:00-19:30	Poster session 2: Health, Mortality, Ageing	McEwan Hall
Friday 14 th June	9:00-10:30	Flash session Climate Change, Individual Attitudes and Behavior	Lecture Theatre A
		Flash session International Migration	Lecture Theatre B
		Labour Force Transitions and Life Stages	Lecture Theatre C
		Internal Migration of Immigrant Origin Populations	LG.08
		Migrant Conflict Chronicles: Displacement Dynamics and Decision Dilemmas	LG.10
		Regional Heterogeneity of Fertility within Countries	LG.09
		Migration and Spatial Dynamics over Time and Space	G.02
		Fertility and Migration	G.03
		EuroMigration Insights: Unravelling Patterns and Returns in European Mobility	G.04
		Family Diversity and Wellbeing	G.05
		Family and Social Ties of Migrants	G.06
		Wellbeing in Older Age	McEwan Hall Main Auditorium
	10:30-11:00	Coffee Break	
	11:00-12:30	Flash session Mortality and Longevity	Lecture Theatre A
		Transition to Adulthood, and Beyond	Lecture Theatre B
		Social and Behavioral Determinants of Health, Wellbeing and Morbidity	Lecture Theatre C
		Ageing, Distance and Care	LG.09
		Mortality Inequalities during the COVID-19 pandemic	G.03
		Contraception and Reproduction	G.04
		Mental and Cognitive Health	G.05
Spatial Segregation and Migrant Populations		G.06	
Innovations in Demographic Modelling and Projections	McEwan Hall Main Auditorium		
12:30-14:00	Lunch & Poster session 3: Migration, Economics, Policies, History	McEwan Hall	
14:00-15:30	Mortality Modelling	Lecture Theatre A	
	Union Formation	Lecture	



European Population Conference



12-15 June
2024
Edinburgh
Scotland, UK



			Theatre B
		Fertility and Work Environment	Lecture Theatre C
		Reproductive Health and Family Planning	LG.06
		Nutrition and Metabolism Disorders	LG.08
		Families, Ageing and Health	G.02
		Till Death (or Divorce) do us Part	G.03
		Advances in Population Research Session. Kinship Demography – An Emerging Field of Research?	G.04
		Human Capital Transmissions	G.05
		Migrant Populations, Family Life and Gender	G.06
		Economic Impacts of Population Change	McEwan Hall Main Auditorium
		Childcare	LG.10
		Gender, Work and Parenthood	LG.09
	15:30-16:00	Coffee Break	
	16:00-17:30	Health, Wellbeing and Morbidity	Lecture Theatre B
		Life Course	Lecture Theatre A
		Partner Selection	Lecture Theatre C
		Mortality Trends and Risk Factors	LG.06
		Money and Inequalities in Families	LG.08
		Socio-economic Inequalities and Impacts	LG.09
		Marriage and Unions of Migrant Populations	G.02
		Climate Change, Morbidity and Mortality	G.03
		Population change and sustainability: The challenges and opportunities of Scotland's ageing population	G.04
		Intergenerational Relations and Transfers	G.05
		Modelling and Forecasting Mortality	G.06
	18:00-19:00	The Demography of Ukraine during Crisis: Mortality, Fertility and Forced Displacement	G.03
	20:00-0:00	EPC Party and Cèilidh (Doors open 8pm, band starts 20:30). Card only transactions.	McEwan Hall
Saturday 15 th June	9:00-10:30	Flash session 2 Economics, Human Capital and Labour Markets	Lecture Theatre A
		Flash session Loneliness, Pandemic and Care	Lecture Theatre B
		Excess Mortality and Life Expectancy Changes during the COVID-19 pandemic	Lecture Theatre C
		Migrant Populations and Fertility	LG.06
		The Impact of Violence on Health, Wellbeing and Morbidity	LG.08
		Parental Leave	LG.10
		Fertility and Reproduction: Bringing Men Back In	LG.09
		Measuring Health, Wellbeing and Morbidity	G.02
		The Role of Social Networks and Diffusion in Fertility	G.03
		Migration and Health	G.04



		Fertility and Gender Equity	G.05	
		Carbon Emissions and Environmental Policies	G.06	
	10:30-11:00	Coffee Break		
	11:00-12:30	Social Inequalities in Health, Wellbeing and Morbidity	Lecture Theatre A	
		Labour Markets and Couples	Lecture Theatre B	
		Modelling and Exploring Infant Mortality	LG.06	
		Internal Migration, Spatial Inequalities and Segregation	LG.08	
		Novel Applications of Traditional Tools in Fertility Studies	LG.09	
		Refugee Realities and Resettlement Reflections	LG.10	
		Flash Session - Changing Mortality Patterns over Time and Space	G.02	
		Work and Family	G.04	
		Policy Development and Measurement	G.05	
		Flash session Gender Differences in Health, Wellbeing and Morbidity	G.06	
		12:30-14:00	Closing & Award Ceremony	Gordon Aikman Lecture Theatre

Registration/Help Desk Timings

We will have a designated person(s) on the registration/help desk in the McEwan Hall (Wednesday to Friday) and on the ground floor of No. 50 George Square (in front of G.01 & G.02) (Saturday morning) to offer assistance if required. At other times please approach an organising committee member in a red lanyard if you need help.

Day	Timings
Wednesday 12 th	12:30 – 17:45
Thursday 13 th	08:30 – 09:15; 10:30 – 11:00; 13:30 – 14:00; 15:30 – 16:00
Friday 14 th	08:30 – 09:00; 10:30 – 11:00; 13:30 – 14:00; 15:30 – 16:00
Saturday 15 th	08:30 – 09:00; 10:30 – 11:00



Travelling in Edinburgh

Edinburgh Airport to City:

We recommend the **Airlink 100** (you can find the navy-blue double decker bus outside arrivals at Edinburgh Airport towards the right as you leave) as it is the cheapest (single £5.50 and return £8). We recommend purchasing an open return ticket (which has no time restrictions) and keep it with you when travelling back to the airport. The bus departs every 10 minutes during the day (04:30-01:00) and 20 minutes (01:00-04:30) Monday to Sunday. The entire journey is 30 minutes (alight the bus at Princes Street and take another bus or embark on a short walk).

You can also travel by **tram**. An open return option is also available (single £6.50 and return £9). Trams depart every 7 minutes (07:00-19:00) and every 10 minutes early in the morning and later in the evening. The first tram is at 06:26 and the last tram is at 22:48. The tram stop is outside arrivals at Edinburgh Airport straight ahead. It takes 35 minutes to travel to Princes Street (City Centre).



Travelling in the City:

Travelling around Edinburgh is very easy by bus (Lothian) and tram. A single journey costs £1.70 (bus) and £1.80 (tram) (tram return costs £3.40). You can also buy a **Lothian** day ticket for £4.50 which gives you unlimited use of **Lothian** buses and trams. Tell the driver that you want this when you get on the first bus or buy at a tram stop. They prefer you paying by card, and you tap the turquoise reader with your card (**if purchasing a single ticket**). **If you pay with cash, you must have the exact change**. Google Maps provides information on bus timings and journeys. Popular bus routes run



European Population Conference



12-15 June
2024
Edinburgh
Scotland, UK



from 6am to midnight. Trams run every 8-10 minutes Monday to Saturday and 12-15 minutes on Sundays. Trams run from 5:30am to around 11pm. There are some night buses for popular routes.

Parking and information for car drivers:

The University of Edinburgh Conference and Events team have advised us to **discourage participants from travelling by car due to the limited parking available**. If you must travel by car you will have to apply for a permit to park in university-controlled parking or pay for parking at non-university-controlled car parks or pay and display zones (**be careful to avoid resident permit only parking areas**). If you are staying at Pollock Halls, you can park your car there, but parking spaces are first come first serve. More information can be found here: <https://transport.ed.ac.uk/travelling-here/central-area>.

The Edinburgh City Council will enforce a **Low Emission Zone** from the 1st of June. This law sets restrictions on vehicle standards that your vehicle must adhere to otherwise you will face fines and penalty notices. Please check the website on the LEZ before you travel to Edinburgh by car including information on routes and vehicle exemptions: <https://www.edinburgh.gov.uk/lez>



Conference Registration

Registration desks:

The Registration Desk is located downstairs via the **main glass pavilion entrance to the McEwan Hall**. On Wednesday 12th June, it will be open from 12:30 until the Opening Ceremony (see p.10 for other opening times). You will be able to collect badges/lanyards at the desk as part of the registration process. **We will not have printouts of the participant pack, or the full programme so please make sure that you have an electronic device from which you can access these documents. However, we will provide a short A5 booklet that includes a programme overview and maps.** Please note that the registration desk will close at 5pm on Friday 14th June but a help desk will be available on the ground floor of No. 50 George Square (in front of G.01 & G.02) on Saturday morning.

We will not be providing bags, stationery (except a conference themed pen), or water bottles so please bring these items with you so we can help do our bit for the planet.

Badges/lanyards:

Badges and lanyards will be provided to all EPC attendees. Badges will display your first name, surname, and institutional affiliation (you may write your pronouns on the badge if you wish to disclose them). Organising Committee members and helpers (including event support staff and St Andrews ECRs) will have a red coloured lanyard so you can spot us easily! **Lanyards should be always worn.**

We will provide participants with a **sticker if you have paid to attend the Cèilidh (as well as a free drink token)**. Please do not lose the sticker or the free drink token because we will not have spares. We would advise all Cèilidh attendees not unpeel the sticker **until a few hours before the Cèilidh**. That way if you are not going to the Cèilidh or are unsure of going, we can still give that sticker to someone else. **You must also stick the sticker on the name badge itself. To that end, you must bring the sticker and your name badge/lanyard to the Cèilidh otherwise you will be refused entry.**

Opening Ceremony:

For the opening ceremony you will be greeted by a bagpiper in true Scottish fashion. You may take pictures with the piper **however please do not touch the piper.**

Wi-Fi access:

Those who are affiliated to an academic institution will be able to access eduroam. Those who are not affiliated to an academic institution will be able to access guest Wi-Fi using the following login details:

Enable Wi-Fi on your device and connect to 'Visit-Ed' Network

2. Registration page will open

3. Either use the Passcode 636-UOEHospitality24 or use SMS or a Social Media account to connect



Presenter Information

Oral/flash presentations:

Session chairs and presenters should **go to the session room at least 15 minutes** before the scheduled starting time of the session. **We strongly recommend bringing a copy of your presentation on a memory stick. Note that it will not be possible to use your own laptop for the presentation.**

There are 4 to 5 presentations in **regular** sessions with sessions lasting **strictly 90 minutes**. You have **12 minutes for your presentation**, followed by discussion. There are 7 to 8 presentations in a **flash** session. You have **5 minutes** for your presentation, followed by discussion (**flash presentations should only have five slides**). The session chair will confirm the length of your talk before the start of the session. Please do not overrun your allotted time as we have a very packed schedule. It is acceptable for audience members to move between sessions but please do this quietly and only leave and enter a room when there is not a presentation ongoing. Session chairs should allow sufficient time for discussion immediately following a presentation.

The login details for each computer will be on the computer desk in each room. Please do not log off any of the computers in rooms at the end of your session. If you are in the last session of the day, please log off.

IT support staff will go into each room at the start of each session to make sure there are no technical difficulties. Please find IT support staff in the corridors if you need any technical assistance. For the side meetings, session organisers should use the landline phone provided in each room to ask for technical assistance.

Posters:

Posters should be in portrait format and A0. Posters should be affixed onto poster boards before the start of each poster session. Velcro for posters will be provided. It is the **responsibility of the poster presenter to put up their poster** before the session starts and to remove it in good time before the beginning of the next poster session. For poster session 1, poster presenters should set up their poster between 10:30 and 12:00 and remove their poster by 15:30 at the latest on the same day. For poster session 2, poster presenters should set up their poster between 15:30 and 16:00 and remove them by 10:30 the next day at the latest. For poster session 3, poster presenters should set up their posters between 10:30 and 12:00 and remove them by 15:30 at the latest on the same day. **We strongly encourage all poster presenters to remove their poster at the immediate conclusion of the poster session.** Poster presenters should be standing next to their poster for the entire poster session. **Please contact us in advance if you have any accessibility requirements.** All posters must be removed from the McEwan Hall before 15:30 on Friday 14 June otherwise it will be recycled by one of our staff.



European Population Conference



12-15 June
2024
Edinburgh
Scotland, UK



Exhibition Stands

Exhibition stands are located on the lower ground floor of No. 40 George Square. These are open throughout the conference. The following will be exhibitors at the conference:

1. EAPS & IUSSP
2. mcEmpirics, University of Potsdam
3. ESRC Centre for Population Change – Connecting Generations
4. Max Planck Institute for Demographic Research
5. Wittgenstein Centre for Demography and Global Human Capital (IIASA, OeAW, University of Vienna)
6. Generations and Gender Programme
7. Federal Institute for Population Research (BiB)
8. FReDA Research Project
9. Institut national d'études démographiques
10. Leverhulme Centre for Demographic Science
11. Comparative Population Studies Project
12. Centre for Demographic Studies (CED), Autonomous University of Barcelona

For further information about our exhibitors please scroll to the bottom of the website:

<https://www.eaps.nl/page/exhibition-stands>



Facilities, Meals, and Breaks

Specific rooms:

A **quiet room** is available for the use of participants on Wednesday afternoon and all-day Thursday and Friday. This is located at the top of the main staircase in the McEwan Hall. Please respect other users and maintain silence when in the room.

The **conference press room** is located through the quiet room at the top of the main staircase in the McEwan Hall. This is for the use of members of the press and is open on Wednesday afternoon and all-day Thursday and Friday.

A **parents' room** is available for those bringing their children to the conference. The room is G.01 on the ground floor of No.50 George Square and available all-day Thursday and Friday and on Saturday morning. Baby-changing facilities are available in the disabled toilet near G.01. Please note that parents should bring food, toys, books etc. for their children as these will not be provided. **Children using the room must be always accompanied by an adult.**

There will be **no access to the McEwan Hall on Saturday** so please make sure you take all your items with you on Friday.

Fire testing information:

There **may** be fire alarm tests during the conference. If so, the timing of these will be advertised at the opening ceremony and on notices in the conference venues. You do not need to evacuate the rooms at the announced times. At other times (or if you are unsure about when the tests are scheduled), **if the fire alarm rings, please leave the building, and follow the signs to the muster point.**

Meals and breaks:

On Thursday and Friday, lunch will be provided at various conference locations including Informatics, McEwan Hall & 40/50 George Square. Participants will be able to pick up/collect their lunch from a lunch station and the lunch offering will be the same at all lunch points. **Specific details will be provided at the start of the conference.** Lunch includes a choice between two healthy Nourish Bowls (one **meat** option and one **vegetarian/vegan** option. **Both bowls are gluten-free**) as well as a sweet treat, fruit, tea, and coffee. **No lunches will be provided on Saturday.**

Nutritional and allergen information for the Nourish Bowls is available online here:

<https://conferenceandevents.mysaffronportal.com/Menus/Details/CE04%20Nourish>



European Population Conference



12-15 June
2024
Edinburgh
Scotland, UK



Those with other dietary requirements should check allergen information using the link above but it may not be possible to cater for all allergies (e.g., serious nut allergies) and those with concerns are advised to bring their own lunches.

Tea, coffee, and biscuits are available at the scheduled break times (self-serving). There are water stations in all our conference venues. Please make sure that you bring a refillable water bottle. **There will be no water available in the sessions.** For the Thursday poster session, we will be providing a glass of free wine, beer, or a soft drink!

For the Cèilidh on Friday, **the bar is debit/credit card only** and will not accept cash. **Please bring formal, photographic ID that shows your birth date in case bar staff challenge your age.** Edinburgh event support staff will operate a full cloakroom service in Foyer 5, McEwan Hall (**for the whole conference**). Valuables left in the space are at a participant's own risk and we advise you to keep valuables with you.

Places to eat for dinner:

We recommend Princes Street (or going in the general direction towards the city centre), Tollcross, and Newington Road as good areas to find a place for dinner (dinner will not be provided at the conference). Please type in the cuisine you fancy or 'restaurants' into Google Maps to get a whole range of options. Edinburgh has a whole host of restaurants that satisfy a diversity of cuisine and spending preferences. There are also a lot of pubs/bars that you can go to (and they may serve food as well). There is also a bar on site at the University of Edinburgh, Pollock Halls.

Emergency Contact Numbers

University of Edinburgh Security	0131 650 2257
University of Edinburgh Events Office	0131 651 2189 (option 1)
Fire and Rescue Service	999
Police Scotland (non-emergency)	101
Royal Infirmary of Edinburgh	0131 536 1000



European Population Conference



12-15 June
2024
Edinburgh
Scotland, UK



Sponsors and Contributors

Centre for Population Change

The ESRC Centre for Population Change (CPC) investigates how and why our population is changing and what this means for people, communities, and governments.

CPC is a collaboration between the Universities of [Southampton](#), [St. Andrews](#), and [Stirling](#), it is an umbrella organisation bringing together multiple projects investigating population change. These projects are financed through a variety of funders, primarily the [Economic and Social Research Council](#).

We work in partnership with the [Office for National Statistics](#) and the [National Records of Scotland](#). We are a founding partner of [Population Europe](#), the network of Europe's leading research centres in the field of policy-relevant population studies.

Website: www.cpc.ac.uk  @CPCpopulation

ESRC Connecting Generations

Connecting Generations aims to understand intergenerational connectivity, producing novel science that contributes to policy debate.

Different generations provide financial, emotional and practical support to each other during different stages of their lives. These intergenerational exchanges interact with and have an impact on life events, and influence health, living standards, social networks and personal resilience. We are exploring how experiences vary by gender, migrant status, ethnicity, education, socio-economic status and geographical context.

Connecting Generations is funded by the **Economic and Social Research Council (ESRC)**. It brings together CPC experts at the Universities of Southampton, St Andrews, and Stirling, with partners at the University of Oxford Leverhulme Centre for Demographic Science, and the Resolution Foundation.

 @ConnectingGens

Max Planck Institute for Demographic Research

The Kinship Inequalities Research Group is based at the **Max Planck Institute for Demographic Research** and headed by Diego Alburez-Gutierrez. It conducts research to advance the subfield of kinship demography, combining demographic modelling with empirical data analysis. The group studies how inequalities in kinship among persons and groups determine individual outcomes and ultimately shape the structure of human societies.

Website:

https://www.demogr.mpg.de/en/research_6120/independent_research_groups_11668/kinship_inequalities_10703



European Population Conference



12-15 June
2024
Edinburgh
Scotland, UK



Wittgenstein Centre for Demography and Global Human Capital

The Wittgenstein Centre for Demography and Global Human Capital is a collaboration among the [Austrian Academy of Sciences](#) (ÖAW), the [International Institute for Applied Systems Analysis](#) (IIASA) and the [University of Vienna](#). The Centre combines the partners' strengths in the fields of demography, human capital formation and analysis of the returns to education. It builds on a highly successful collaboration that has already generated significant scientific advances. "Human capital" refers to the human resource base in terms of the number of people and their changing structure by age, gender, location, education, health status, cognitive skills, and other relevant characteristics. Our intent is to provide a sound scientific foundation for decision-making at various levels.

Website: <https://www.wittgensteincentre.org/en/index.htm>

Scottish Government's Population Team

The Scottish Government's Population Team sits within the Population and Migration Division within the Directorate for External Affairs. It leads the work of the Scottish Government's [Population Programme](#), which with oversight from the [Ministerial Population Taskforce](#) is responsible for implementing [Scotland's first national Population Strategy](#), published in 2021. The team has led the development of an [Addressing Depopulation Action Plan](#), and a [Rural Visa Pilot proposal](#) which would enable targeted migration to rural and island communities facing labour market shortages and depopulation. The team also supports the work of the independent [Expert Advisory Group on Migration and Population](#), which provides expert advice and research to support policy development within the Programme.

Website: <https://www.gov.scot/publications/population-programme-factsheet/pages/population-programme-factsheet/>

European Association for Population Studies

EAPS is a professional, non-profit organization that promotes the study of population. EAPS covers the broad field of interdisciplinary population studies and has a special, though not exclusive, focus on Europe.

Spanning the full range of population studies, EAPS membership is open to all persons who are engaged or interested in the study of population and who support the goals of EAPS. EAPS is an inclusive and open community of researchers from many disciplines with an interest in high-quality research and training in population studies, including demography, sociology, economy, health sciences, regional studies, history, law, and others.

To further its mission, EAPS

- organizes the flagship [European Population Conference](#) every other year
- has [Working Groups](#) on key population issues as well as topical [Networks](#) that organize webinars and (training) workshops
- has a peer-reviewed [Awards program](#) honoring outstanding achievements in all career stages
- initiated and supports the [European Doctoral School of Demography EDSD](#), the [European Journal of Population](#) and the [European Studies of Population book series](#)



European Population Conference



12-15 June
2024
Edinburgh
Scotland, UK



- initiated and collaborates with [Population Europe](#), the leading European network of research institutions
- maintains a website and publishes a bi-weekly [Newsletter](#)

You are most welcome to join our EAPS community! To register go to our **website:** www.eaps.nl

University of St Andrews School of Geography and Sustainable Development

The School of Geography and Sustainable Development at the University of St Andrews is a leading centre for scholarship in the field of geography and sustainable development, integrating the study of the Earth's system with its landscapes, peoples, places, and environments. 94% of the school's research overall was rated as world leading or internationally excellent by the Research Excellence Framework 2021. The school hosts a number of research groups which provide a platform to exchange research information and ideas including Population and Health, Environmental Change, and Geographies of Sustainability, Society, Inequalities and Possibilities. The school is ranked fourth in the UK by The Times Good University Guide 2023.

Website: <https://www.st-andrews.ac.uk/geography-sustainable-development/>

MigrantLife Project

The MigrantLife project investigates how employment, housing and family trajectories evolve and interact in the lives of immigrants and their descendants in the UK, France, Germany, and Sweden; and how factors related to a societal context, an early life context and critical transitions shape their life histories. This project shows whether the current heterogeneity between and within immigrant and minority groups vanishes over time or rather persists, suggesting an increasing diversity of European societies. The MigrantLife project is funded by the European Research Council (ERC) under the European Union's Horizon 2020 research and innovation programme.

Website: <https://migrantlife.wp.st-andrews.ac.uk/>



European Population Conference



12-15 June
2024
Edinburgh
Scotland, UK



Organising Committee

Special thanks to EAPS and local organising committee for organising EPC as well as Edinburgh First (Rachel Foot and Gordon Dow) for operational and logistical support and provision.

EAPS Council and International Organising Committee

Hill Kulu (EAPS President, University of St Andrews)

Emilio Zagheni (Max Planck Institute for Demographic Research)

Anna Matysiak (Warsaw University)

Giancarlo Camarda (INED)

Raya Muttarak (University of Bologna)

Nico van Nimwegen (EAPS Executive Director and Conference Secretary)

Judith Koops (EAPS Executive Secretary and Conference Secretariat)

National and Local Organising Committee (University of St Andrews)

Hill Kulu

Elspeth Graham

Julia Mikolai

Parth Pandya

Susan Watson

Melinda Mills (University of Oxford)

Jane Falkingham (University of Southampton)



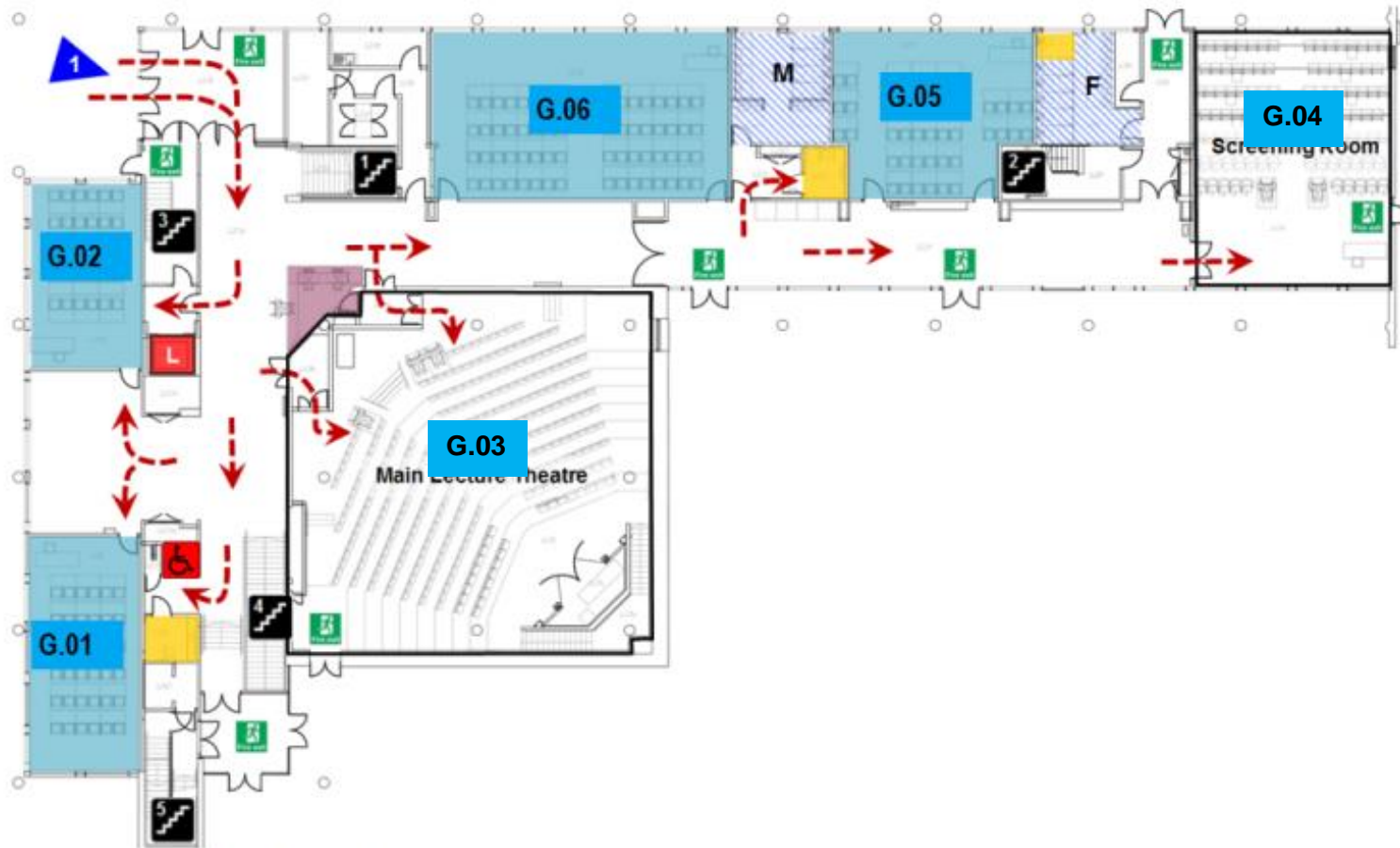
European Population Conference



12-15 June 2024
Edinburgh
Scotland, UK



Conference
Maps
50 George Square:



Ground Floor Plan – Number 50 George Square

- - - Wheelchair Access Route
- L Lifts
- Platform Lift
- Fire Exits
- Reception
- F - Female Toilets
- M - Male Toilets
- Teaching Room
- Accessible Toilets
- Standard Toilets
- Evacuation Call Point



European Population Conference

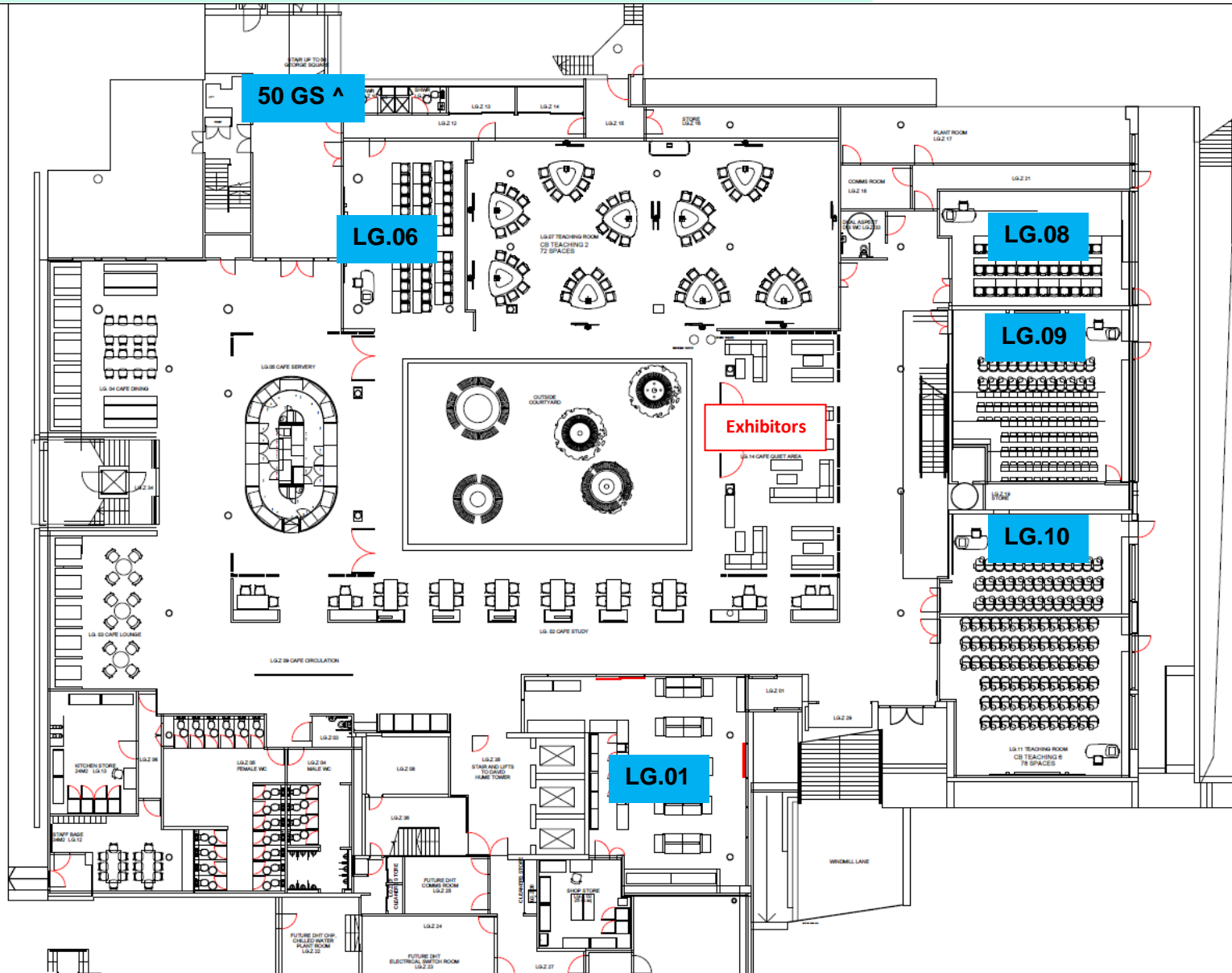


12-15 June 2024
Edinburgh
Scotland, UK



University of St Andrews

40 George Square:





European
Population
Conference

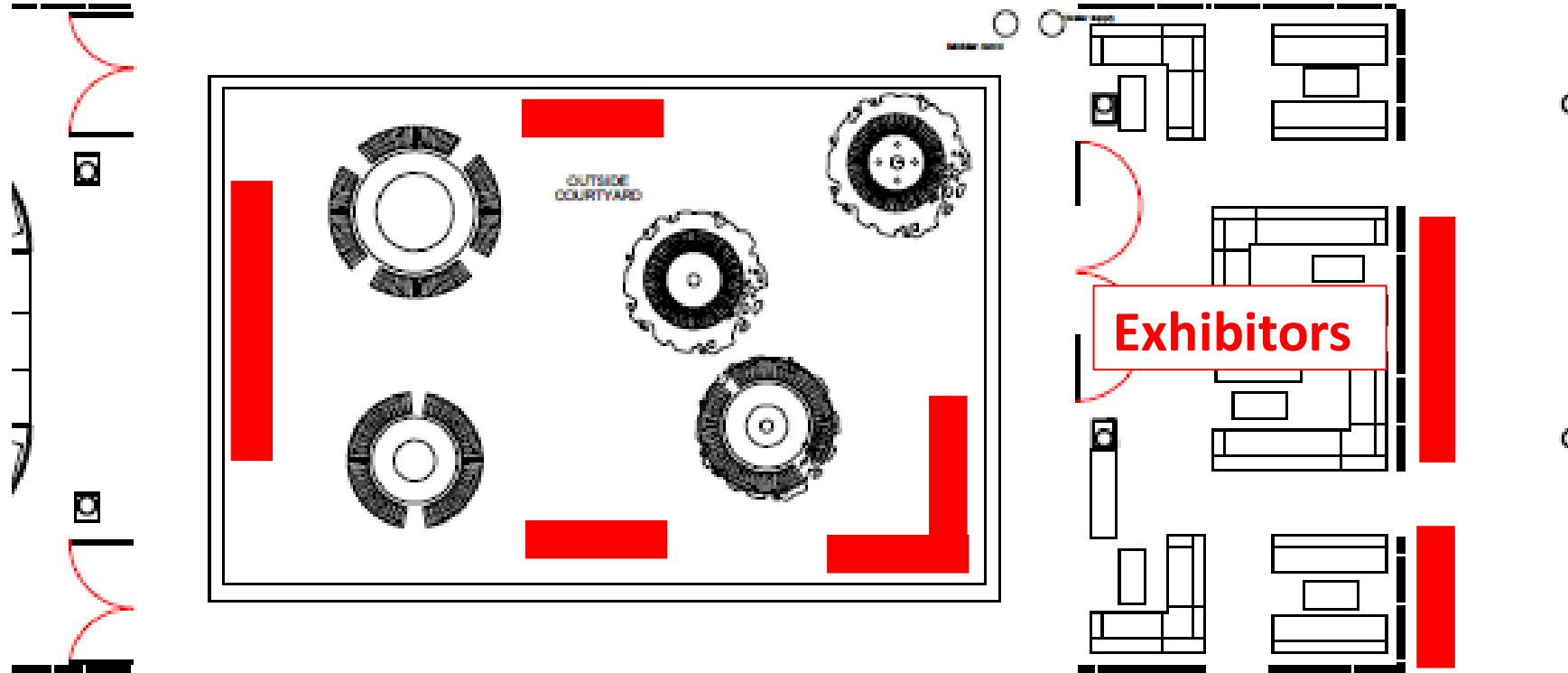


12-15 June
2024
Edinburgh
Scotland, UK



Lunch/coffee station maps:

40 George Square lunch & coffee points:





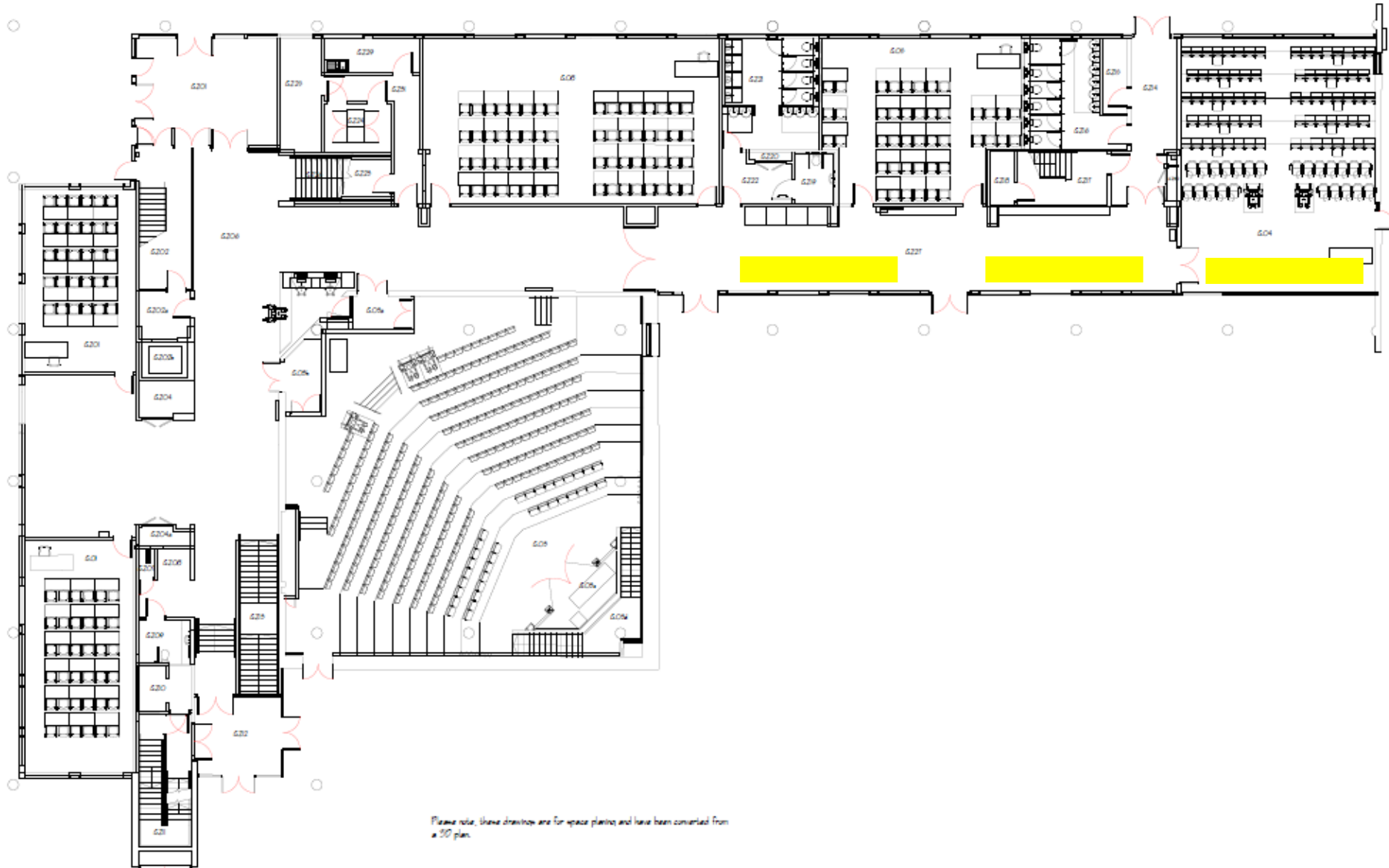
European
Population
Conference



12-15 June
2024
Edinburgh
Scotland, UK



50 George Square coffee points:

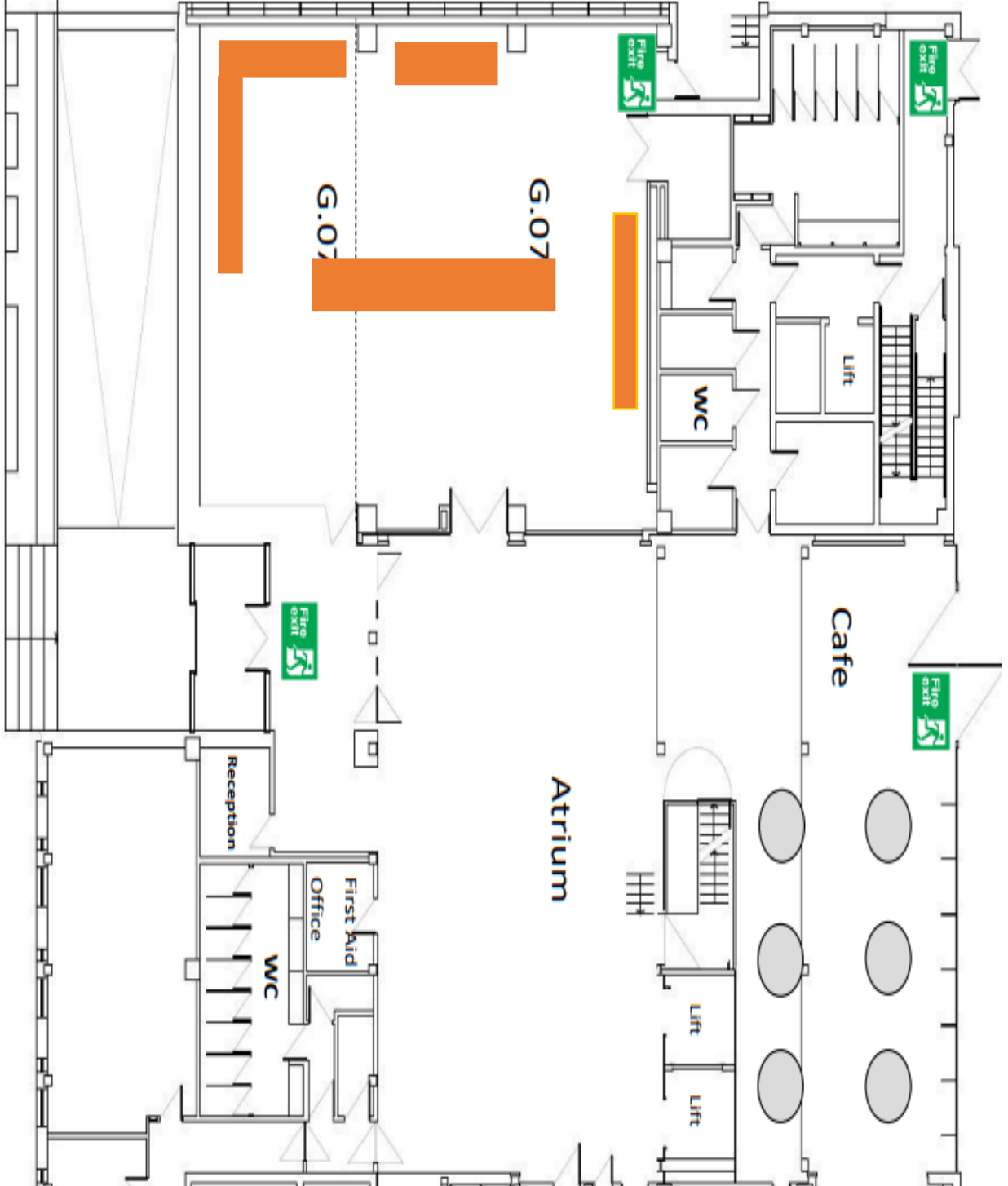


Please note, these drawings are for space planning and have been converted from a 3D plan.



European Population Conference

Informatics coffee and lunch points:





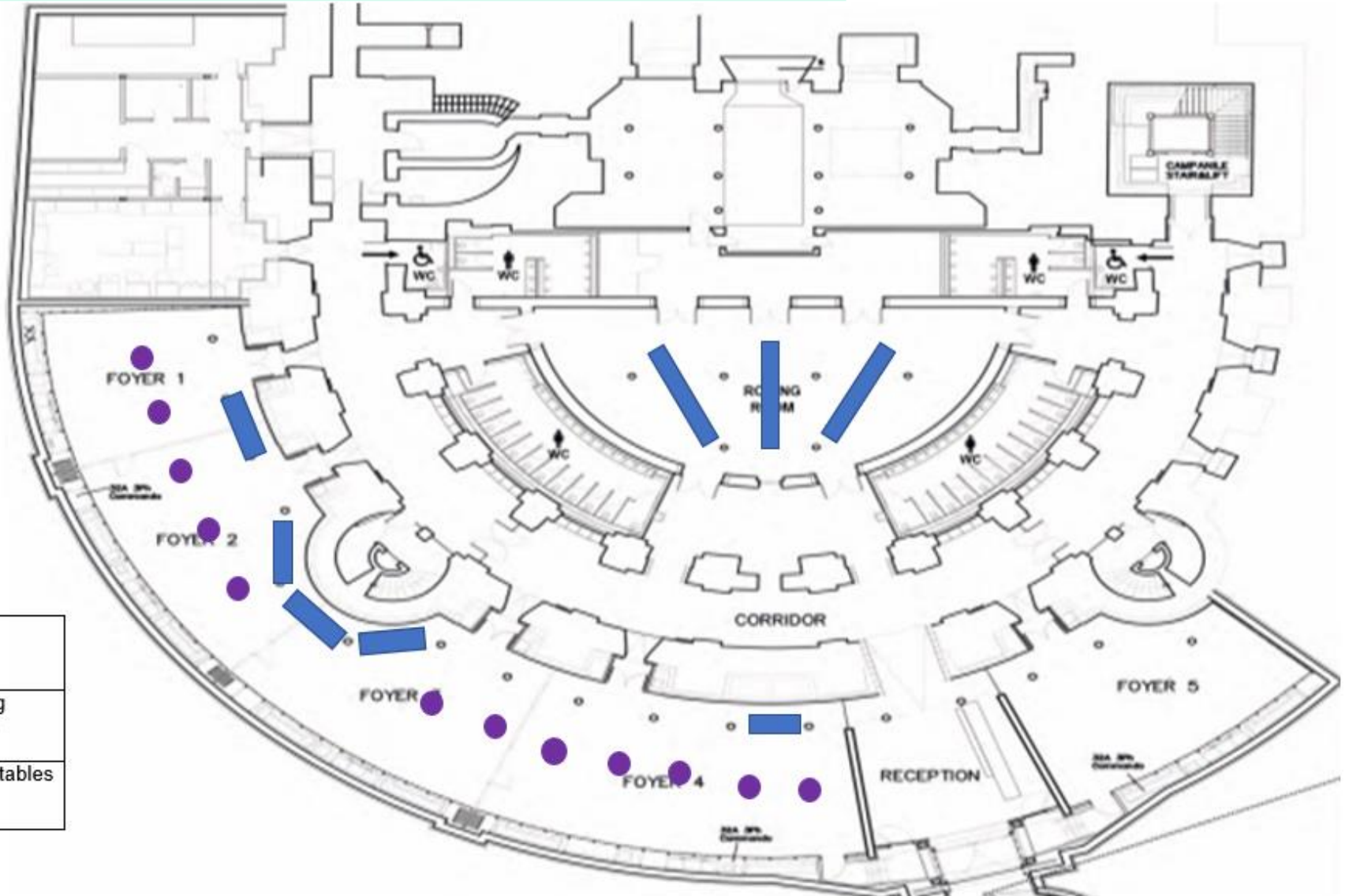
European Population Conference



12-15 June 2024
Edinburgh
Scotland, UK



McEwan Hall
coffee
and lunch
points:



Key	
	Catering stations
	Poseur tables



European
Population
Conference

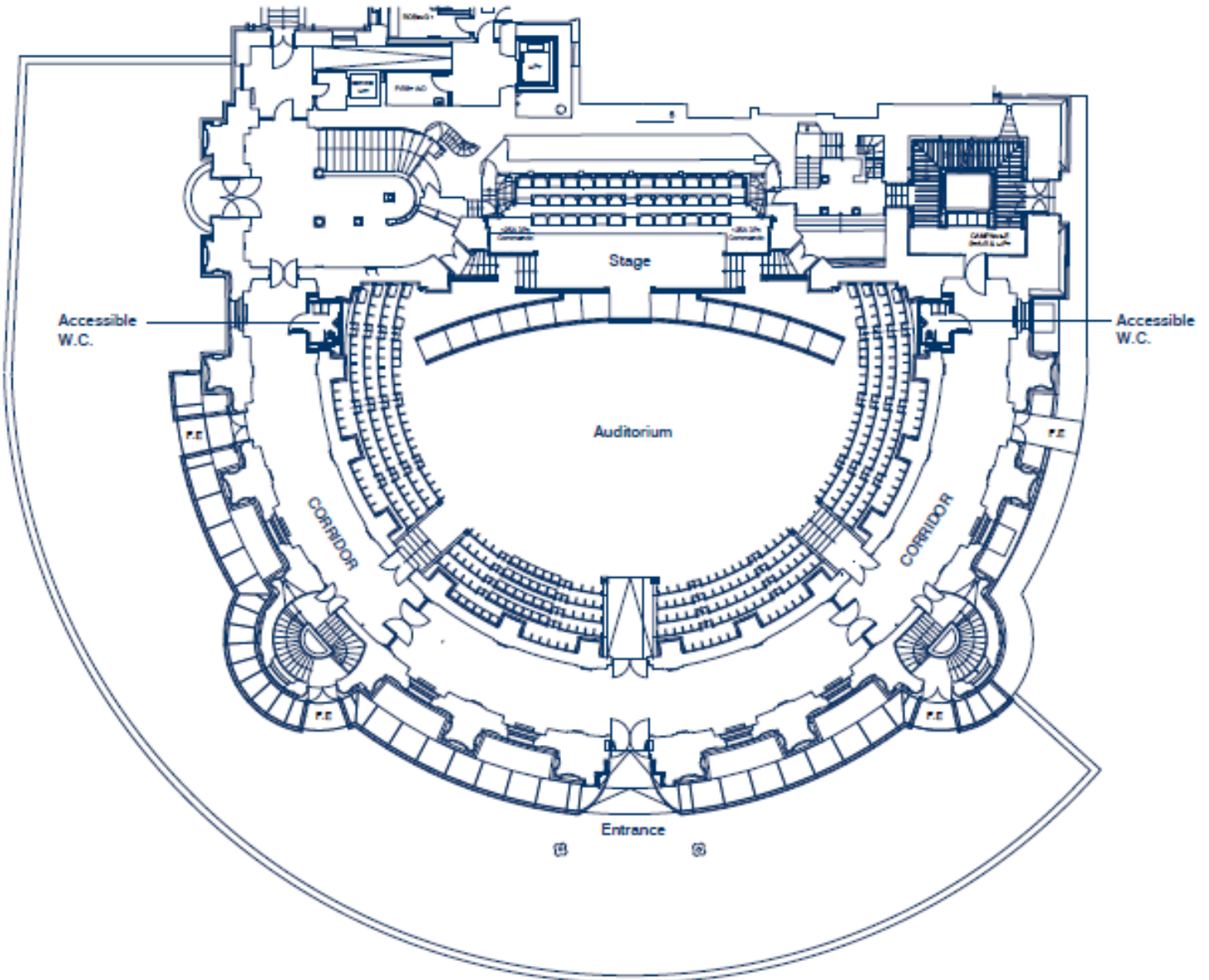


12-15 June
2024
Edinburgh
Scotland, UK



McEwan Hall

McEwan Hall, Teviot Place, Edinburgh





European Population Conference



12-15 June
2024
Edinburgh
Scotland, UK

